



VST120 Series



VST120



VST120-4

SPECIFICATIONS

Operating Temp. Range	0 to 60 °C (32 to 140 °F)
Operating Humidity Range	10 to 90% RH non-condensing
Relay Status	LED ON=coil energized
Auxiliary Supply for HOA	24 Vac/dc (supplied from a Class 2 or LVLE source)*
Expected Relay Life	Electrical (@ rated current) 100,000 cycles; Mechanical (unpowered) 10,000,000 cycles
Insulation Class	600 Vac RMS (coil to contact); 120 Vac RMS (terminal to surface)

WARRANTY

Limited Warranty	5 years
------------------	---------

*Class 2 source: A source that provides a Class 2 power supply as defined by the NEC, NFPA70.

LVLE: Low voltage limited energy, not capable of providing more than 30 Vac/42.4 Vdc, 8 A or 100 VA.

SNAPTRACK is a trademark of Tyco Electronics.

TYPICAL COIL PERFORMANCE

Voltage	Coil Current	
	AC	DC
24 V	75 mA	32 mA
120 V	42 mA	

CONTACT RATINGS

Resistive	20 A @ 250 Vac
	10 A @ 28 Vdc
Motor	120 Vac, 1 HP

SPACE-SAVING OPEN-STYLE RELAYS

FEATURES

- Relay logic
- Sense voltages for alarm conditions
- Mount relay right in panel to save installation time and space on the jobsite
- HOA switch allows for easy job commissioning (VST121(-4))
- LED to prove coil status...saving labor costs
- High power 20 A relay
- 4" models come with pre-drilled holes for direct panel/wall mounting... one unit with multiple mounting options, fewer models to purchase, stock, and install

DESCRIPTION

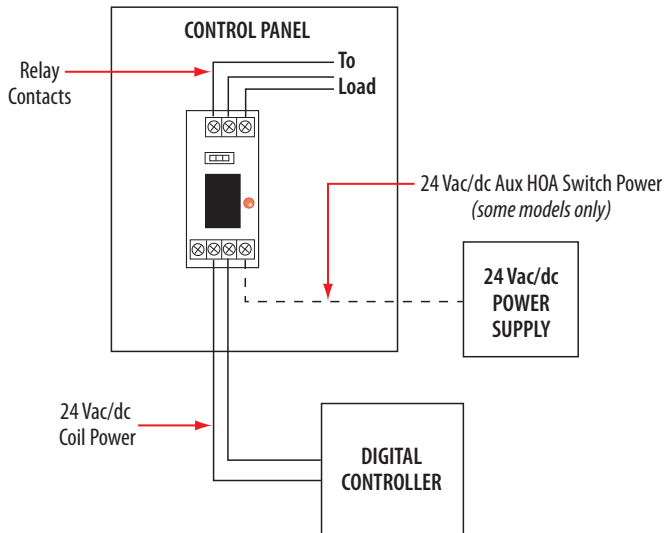
The **VST120 Series** track mount industrial-strength relays will easily mount to either 2.75" or 4" SNAPTRACK™. The space-saving design allows you to fit many relays in a single electrical box for easy installation and servicing. These devices include convenience features such as an LED for coil status indication and an HOA switch for local control (see ordering table for models with HOA switches).

APPLICATIONS

- Lighting panels
- Control motors
- Isolation
- Device interlocking

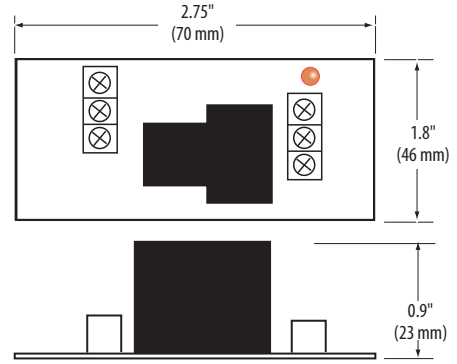


WIRING DIAGRAM

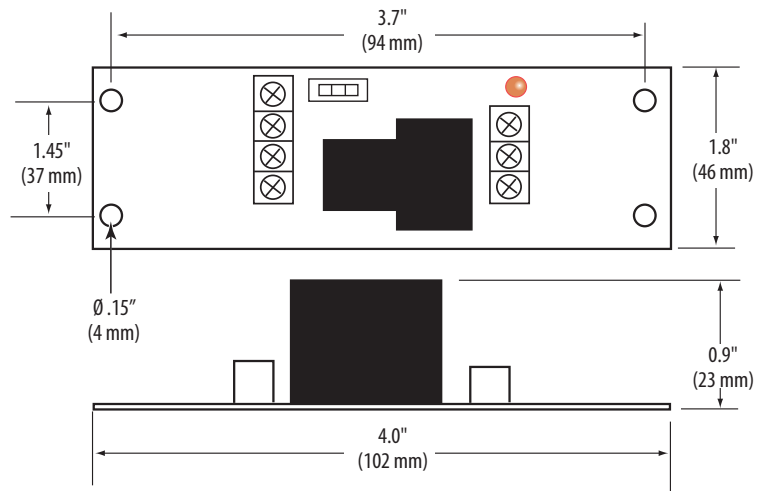


DIMENSIONAL DRAWINGS

VST 120 & VST 121



VST 120-4 & VST 121-4



ORDERING INFORMATION



MODEL	RELAY	COIL	AMPERAGE RATING	HOA	LENGTH	RELAY POWER LED	UL
VST120	SPDT	24 Vac/dc, 120 Vac	20 A		2.75" (69.9 mm)	●	●
VST120-4					4.0" (101.6 mm)	●	●
VST121				●*	2.75" (69.9 mm)	●	●
VST121-4				●*	4.0" (101.6 mm)	●	●

*Coil side Hand-Off-Auto switch contained in low-voltage portion of input circuit

ACCESSORIES

2" and 12" lengths of SNAPTRACK™ (AV03, AV04, AV05, AV06)

