

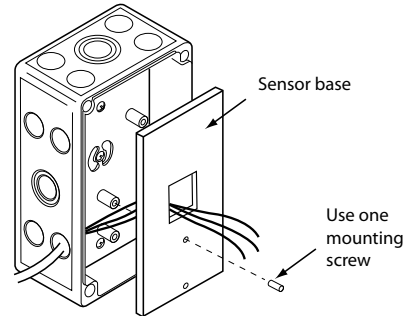
AA35



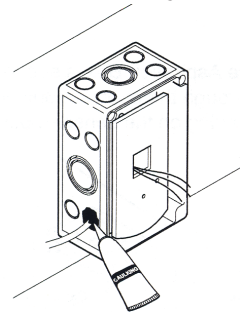
AA35

Aspiration Box Duct Housing for CW Series CO₂ Sensor

- Once the aspiration box is secure, pass the wiring through the open conduit hole and the large opening on the sensor mounting bracket.



- Using one of four mounting screws (provided), secure the sensor mounting bracket to the four stand-off posts in the aspiration box.
- For proper operation, keep the aspiration box airtight. Seal any open conduit holes with caulk or putty.

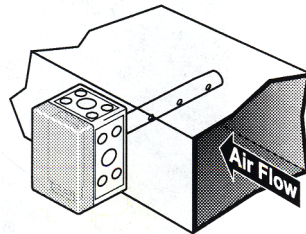


NOTICE

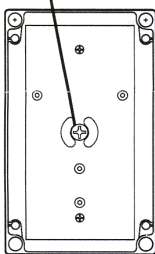
- This product is not intended for life or safety applications.
- Do not install this product in hazardous or classified locations.
- Read and understand the instructions before installing this product.
- Turn off all power supplying equipment before working on it.
- The installer is responsible for conformance to all applicable codes.

INSTALLATION

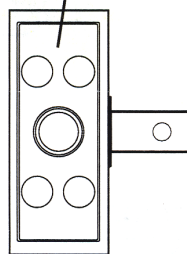
- Choose a location for mounting in the return air duct. This location must be easily accessible for modifying or calibrating the sensor.
- Remove the box cover by unscrewing the four plastic screws. Using the box as a template, mark the position for the four mounting holes and one 1.25" hole (for the inlet tubing) on the duct. On the duct, drill or punch these mounting holes.



Inlet Tube Screw



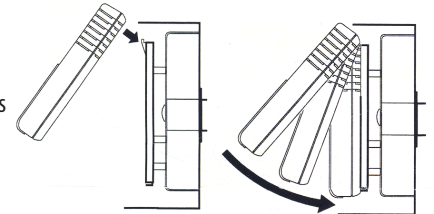
Conduit Knockout(s)



- Position the box and inlet tube for insertion into the duct. Turn the tube as needed to make the three holes on the inlet tube face the duct air flow with the box oriented vertically.
- Secure the inlet tube by tightening the large screw located in the center of the mounting bracket. Using a sharp object, punch through a conduit knockout. The aspiration box is ready to be mounted on the duct.
- Mount the aspiration box to the duct using four sheet metal screws. Verify the three holes on the inlet tube are facing the airflow.

Sensor Installation

- Mount the top of the sensor to the top of the plastic mounting plate. Firmly press the lower half of the sensor into place.
- Upon powering up, the LCD will read "INITIAL WARMUP" for approximately 15 seconds. After 1 minute the sensor will begin reading ambient CO₂ levels.
- Fasten the lid of the aspiration box and tighten the four plastic screws.



Sensor Removal

- Remove the plastic cover.
- The sensor is hinged at the top and fastened at the lower end. To remove the sensor, pull from the bottom and lift outward. The sensor fits snugly into place, and removal may require a hard pull.

