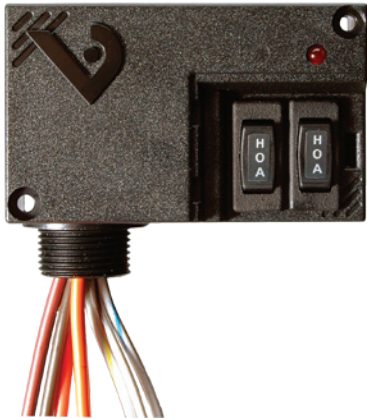


V421



V421

20A DPST Enclosed Relay with HOA Switches

Installer's Specifications

Operating Temperature	-40° to 40°C (-40° to 104°F)
Operating Humidity	10-90% RH, non-condensing
Expected Relay Life	Electrical (@ rated current) 100,000 cycles Mechanical (unpowered) 10,000,000 cycles
Relay Status	LED ON=energized
Wire Specifications:	
Lead Length	14"(356mm) min.
Gauge	UL1015; Coil: 18AWG; Contacts: 12AWG; HOA monitor wires: 16AWG
Insulation Class	277VAC RMS
Agency Approvals	UL 508 enclosed device listing



QUICK INSTALL

Disconnect and lock out all power sources before beginning the installation.

- Using the threaded nipple, connect the device to the desired enclosure through a knock out.
- Secure with the conduit nut provided.
- Connect Coil:
 - Choose the coil common lead (white with yellow stripe) and connect it to the (-) source termination point.
 - Choose either the low voltage (24VAC/DC, white with blue stripe) or high voltage (208-277VAC, white with brown stripe) lead, depending on the application requirements, and connect it to the (+) source termination point.*
- Connect Relay Contacts:
 - Output 1: Connect the two solid orange wires (N.O. contact) to the switched load.
 - Output 2: Connect the two solid brown wires (N.O. contact) to the switched load.
- Secure your enclosure and reconnect power.

* Wires that are not terminated must be isolated or insulated, i.e. wire nut.

DANGER

HAZARD OF ELECTRIC SHOCK, EXPLOSION, OR ARC FLASH

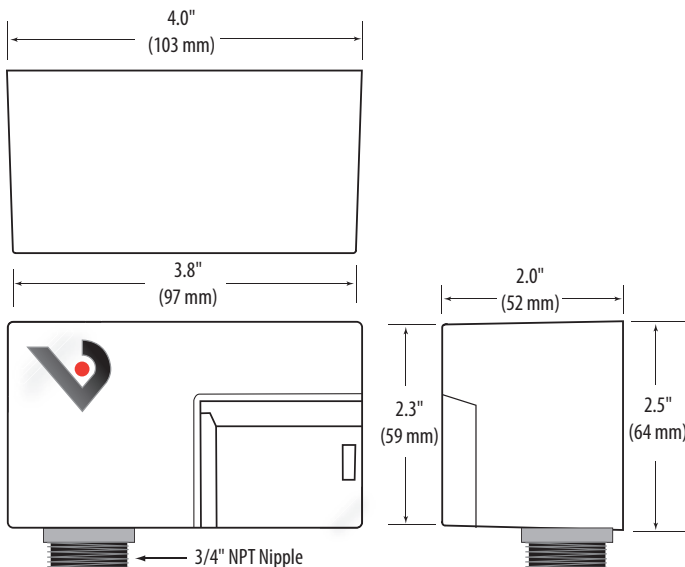
- Follow safe electrical work practices. See NFPA 70E in the USA, or applicable local codes.
- This equipment must only be installed and serviced by qualified electrical personnel.
- Read, understand and follow the instructions before installing this product.
- Turn off all power supplying equipment before working on or inside the equipment.
- Use a properly rated voltage sensing device to confirm power is off.
DO NOT DEPEND ON THIS PRODUCT FOR VOLTAGE INDICATION
- Only install this product on insulated conductors.

Failure to follow these instructions will result in death or serious injury.

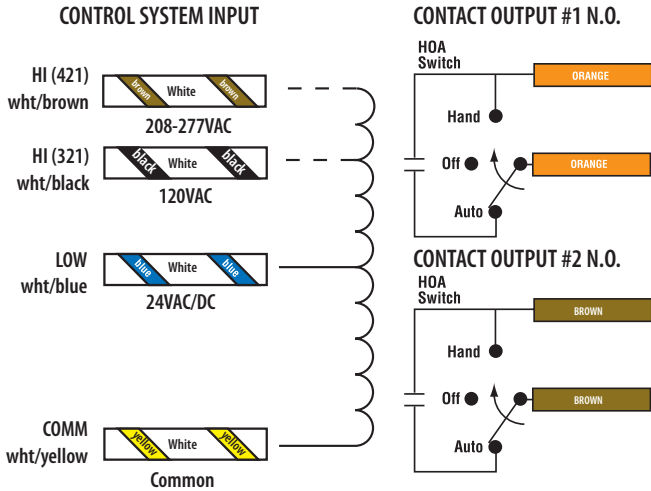
NOTICE

- This product is not intended for life or safety applications.
- Do not install this product in hazardous or classified locations.
- The installer is responsible for conformance to all applicable codes.
- Mount this product inside a suitable fire and electrical enclosure.

DIMENSIONS

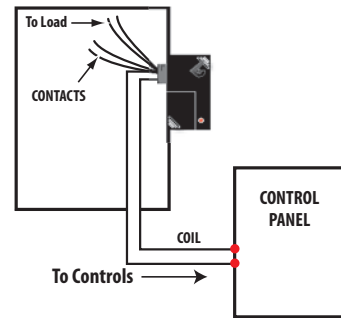


WIRING COLOR CODES

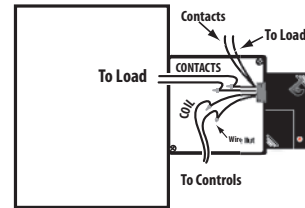


WIRING EXAMPLE

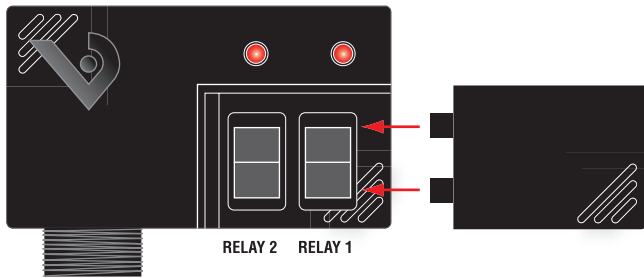
Nipple mount directly to a panel






Nipple mount to any 2x or 4x electrical box



HOA POSITIONS



-  **HAND** — UP Position: contacts are closed.
-  **OFF** — MIDDLE Position: the contacts are open.
-  **AUTO** — DOWN Position: the control system actuates the contacts.

CONTACT AND COIL SPECIFICATIONS

TYPICAL COIL PERFORMANCE		
Voltage	Coil Current	
	AC	DC
24V.....	120mA	64mA
120V.....	84mA	-
277V.....	102mA	-

CONTACT RATINGS	
Resistive.....	20A@240VAC 8A@28VDC 14A@14VDC
Motor.....	120VAC, 1HP