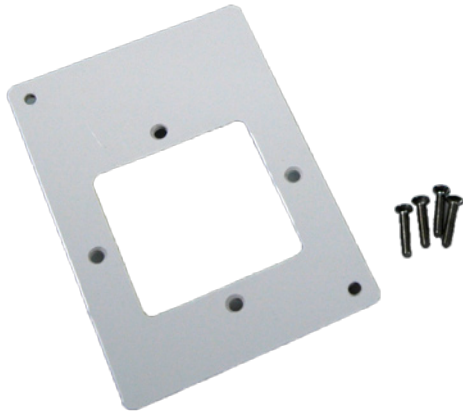


AA57



AA57

European Wall Mount Adapter Kit for PX

INSTALLATION



1. Insert tubing and wiring through back of junction box (junction box not included with AA57).

NOTICE

- This product is not intended for life or safety applications.
- Do not install this product in hazardous or classified locations.
- Read and understand the instructions before installing this product.
- Turn off all power supplying equipment before working on it.
- The installer is responsible for conformance to all applicable codes.



2. Attach adapter plate to junction box.



3. Run wiring into PX. Wire to terminals as shown in PX installation guide.



4. Thread screws through adapter plate and into wall.



5. Completed assembly.

PRODUCT IDENTIFICATION

AA57