



AA47

AA47
Power Pack

Installer's Specifications

Storage Temperature	-20 °F to 150 °F (-29 °C to 65 °C)
Operating Temperature	32 °F to 104 °F (0 °C to 40 °C)
Maximum Humidity	90% non-condensing
AC Power Input	120 or 277 Vac ± 10%, 60 Hz
Output Voltage	24 Vdc
Output Current	100 mA nominal
Horsepower Rating	1 hp @ 120 V
Switching Capacity	120 Vac, 60 Hz; 15 A tungsten 1800 W 20 A ballast; 277 Vac, 60 Hz; 20 A ballast

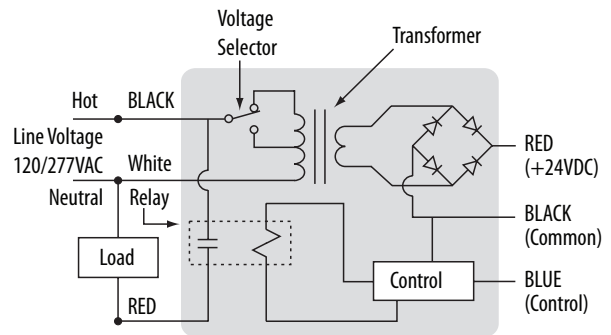
DESCRIPTION

The Veris Power Pack has a line input of 120 or 277 VAC, and a single-pole, single-throw, relay output for the load. A full wave rectifier converts the AC line voltage to 24 VDC to power a low voltage sensor via Class 2, plenum-rated leads. The power pack can be mounted inside or outside of an electrical junction box.

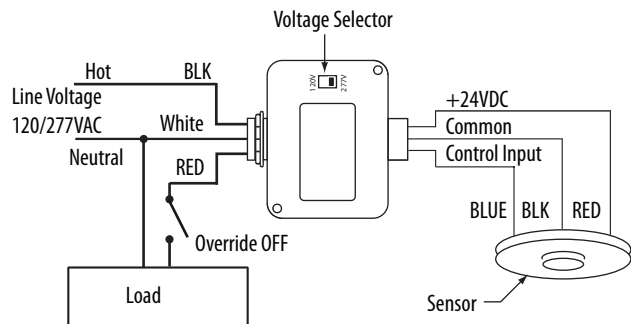
FEATURES

- 100 mA power output can supply up to three sensors
- Single-pole, normally open relay
- Rated for plenum use
- Relay rated for maximum 15A tungsten and 20A ballast loads
- Mounts to a standard 4-in. x 4-in. junction box using a ½-in., threaded EMT nipple

Schematic Diagram:



System Diagram:



⚠ DANGER ⚡

HAZARD OF ELECTRIC SHOCK, EXPLOSION, OR ARC FLASH

- Follow safe electrical work practices. See NFPA 70E in the USA, or applicable local codes.
- This equipment must only be installed and serviced by qualified electrical personnel.
- Read, understand and follow the instructions before installing this product.
- Turn off all power supplying equipment before working on or inside the equipment.
- Use a properly rated voltage sensing device to confirm power is off.
- DO NOT DEPEND ON THIS PRODUCT FOR VOLTAGE INDICATION
- Only install this product on insulated conductors.

Failure to follow these instructions will result in death or serious injury.

INSTALLATION INSTRUCTIONS

1. Provide separate overcurrent protection in accordance with the National Electrical Code® and applicable local codes.
2. Use copper wire only.
3. Confirm that the device rating is proper for your application.
4. Set the voltage selector on the front of the unit to either 120 or 277 V, depending on your application. The unit is shipped with the selector set to 277 V.
5. Mount the power pack to a suitable junction box using the ½-in., threaded nipple and lock. The power pack is plenum-rated, and can be mounted to the inside or the outside of a junction box or fixture in a ceiling plenum.
6. Connect the power pack as shown. Use approved wire nuts for electrical connections.

